

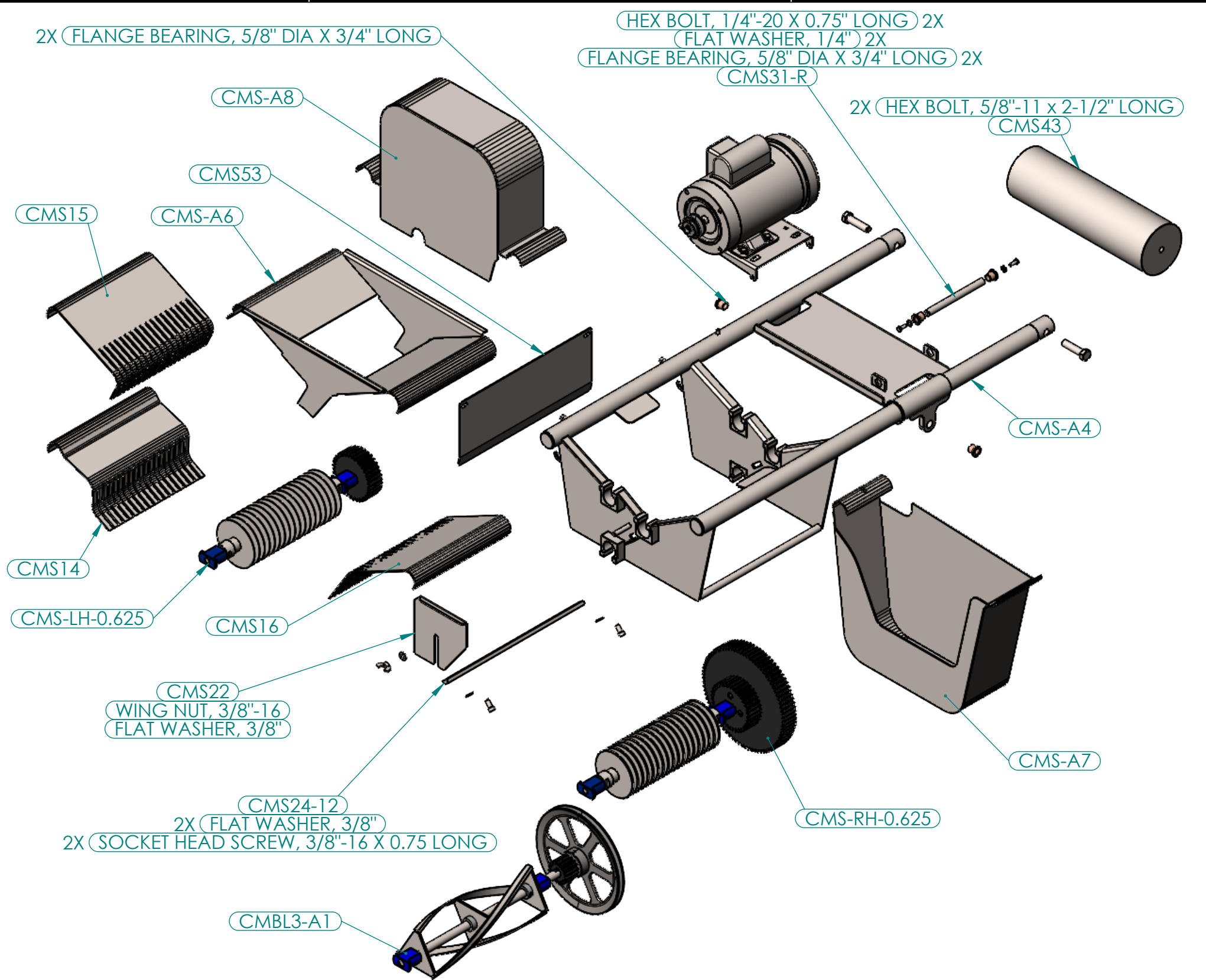
4

3

2

1

PART NO	DESCRIPTION	QTY
CMS-A4	CURD MILL, FRAME ASSEMBLY	1
CMS-A5	CURD MILL, MOTOR MOUNT ASSEMBLY	1
CMS-A6	CURD MILL HOPPER ASSEMBLY	1
CMS-A7	DRIVE GUARD, BOTTOM ASSEMBLY	1
CMS-A8	DRIVE GUARD, TOP ASSEMBLY	1
CMS-LH-0.625	CURD MILL, LEFT HAND (UPPER) CUTTING DISC ASSEMBLY	1
CMS-RH-0.625	CURD MILL, RIGHT HAND (LOWER) CUTTING DISC ASSEMBLY	1
CMBL3-A1	TRI-BLADE ASSEMBLY	1
CMS14	UPPER CUTTING DISC, FINGER GUARD, UNDER	1
CMS15	UPPER CUTTING DISC, FINGER GUARD, OVER	1
CMS16	LOWER CUTTING DISC, FINGER GUARD	1
CMS22	SHAFT END COVER RH	1
CMS41	COVER LOCK	1
CMS53	CURD DEFLECTOR	1
CMS24-12	CUTTING BAR	1
CMS31-R	MOTOR BAR	1
CMS43	MILL COUNTER WEIGHT	1
3746K22	FLANGE BEARING, 5/8" DIA X 3/4" LONG	4



B

B

A

A

SHOWN PARTS LIST DOES NOT INCLUDE STANDARD FASTENERS OR MOTOR (WHICH CAN BE NON-STANDARD)

Ullmer's Dairy Equipment							TITLE: CURD MILL- FULL PARTS LIST		
QUANTITY: 1	PUNCH:	DIE:	MATERIAL:	NAME	DATE		SIZE	DWG. NO.	REV
PROPRIETARY AND CONFIDENTIAL THE INFORMATION CONTAINED IN THIS DRAWING IS THE SOLE PROPERTY OF ULLMERS DAIRY EQUIPMENT. ANY REPRODUCTION IN PART OR AS A WHOLE WITHOUT THE WRITTEN PERMISSION OF ULLMERS DAIRY EQUIPMENT IS PROHIBITED.	UNLESS OTHERWISE SPECIFIED: DIMENSIONS ARE IN INCHES TOLERANCES: FRACTIONAL: ± 1/16 ANGULAR: BEND ± 0.50 TWO PLACE DECIMAL ± .030 THREE PLACE DECIMAL ± .010		304 SS	DRAWN	JTK	2/20/2023	B	CURD MILL PART LIST	
	LAST SAVED	2/24/2023	DO NOT SCALE DRAWING	REVISD	JTK	2/24/2023	SCALE: 1:10	WEIGHT:	SHEET 1 OF 11
				ENG APPR.					
				MFG APPR.					
				Q.A.					

4

3

2

1

4

3

2

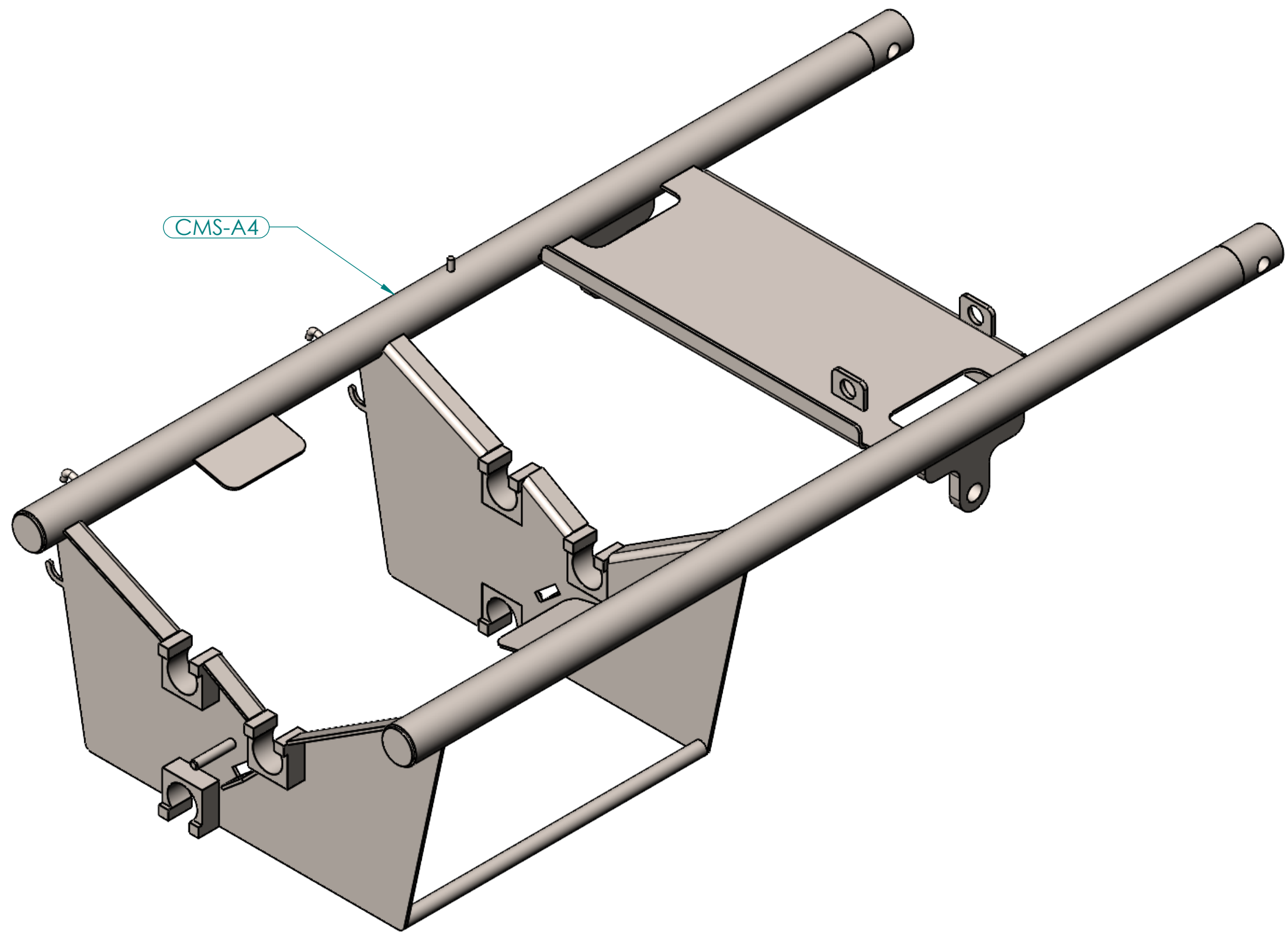
1

B

B

A

A



CMS-A4

ALL PARTS IN THIS ASSEMBLY ARE FULLY FABRICATED AND THEREFORE CANNOT BE SOLD SEPERATELY

Ullmer's Dairy Equipment						
QUANTITY:	PUNCH:	DIE:	MATERIAL:	NAME	DATE	TITLE:
PROPRIETARY AND CONFIDENTIAL THE INFORMATION CONTAINED IN THIS DRAWING IS THE SOLE PROPERTY OF ULLMERS DAIRY EQUIPMENT. ANY REPRODUCTION IN PART OR AS A WHOLE WITHOUT THE WRITTEN PERMISSION OF ULLMERS DAIRY EQUIPMENT IS PROHIBITED.	UNLESS OTHERWISE SPECIFIED: DIMENSIONS ARE IN INCHES TOLERANCES: FRACTIONAL: ± 1/16 ANGULAR: BEND ± 0.50 TWO PLACE DECIMAL ± .030 THREE PLACE DECIMAL ± .010		304 SS	DRAWN JTK	2/20/2023	CURD MILL- FRAME ASSEMBLY
				REVISED JTK	2/24/2023	SIZE B
			INTERPRET GEOMETRIC TOLERANCING PER: DO NOT SCALE DRAWING	ENG APPR.		DWG. NO. CURD MILL PART LIST
	LAST SAVED	2/24/2023	Q.A.	MFG APPR.		REV
						SCALE: 1:4
						WEIGHT:
						SHEET 2 OF 11

4

3

2

1

4

3

2

1

KNURLED HEAD THUMB SCREW, 3/8"-16 X 3.5" LONG

HEX NUT, 3/8"-16

CMS-A5

WELDED

3/8"-16 CAP NUT

ALL PARTS IN THIS ASSEMBLY ARE PREFERRED TO BE SOLD TOGETHER

Ullmer's Dairy Equipment

QUANTITY: PROPRIETARY AND CONFIDENTIAL THE INFORMATION CONTAINED IN THIS DRAWING IS THE SOLE PROPERTY OF ULLMERS DAIRY EQUIPMENT. ANY REPRODUCTION IN PART OR AS A WHOLE WITHOUT THE WRITTEN PERMISSION OF ULLMERS DAIRY EQUIPMENT IS PROHIBITED.	PUNCH: UNLESS OTHERWISE SPECIFIED: DIMENSIONS ARE IN INCHES TOLERANCES: FRACTIONAL: ± 1/16 ANGULAR: BEND ± 0.50 TWO PLACE DECIMAL ± .030 THREE PLACE DECIMAL ± .010	DIE: LAST SAVED 2/24/2023	MATERIAL: 304 SS INTERPRET GEOMETRIC TOLERANCING PER: DO NOT SCALE DRAWING	NAME	DATE	TITLE: CURD MILL- MOTOR MOUNT SIZE B DWG. NO. CURD MILL PART LIST SCALE: 1:2 WEIGHT: SHEET 3 OF 11	
				DRAWN	JTK		2/20/2023
				REVISED	JTK		2/24/2023
				ENG APPR.			
				MFG APPR.			

4

3

2

1

B

B

A

A

4

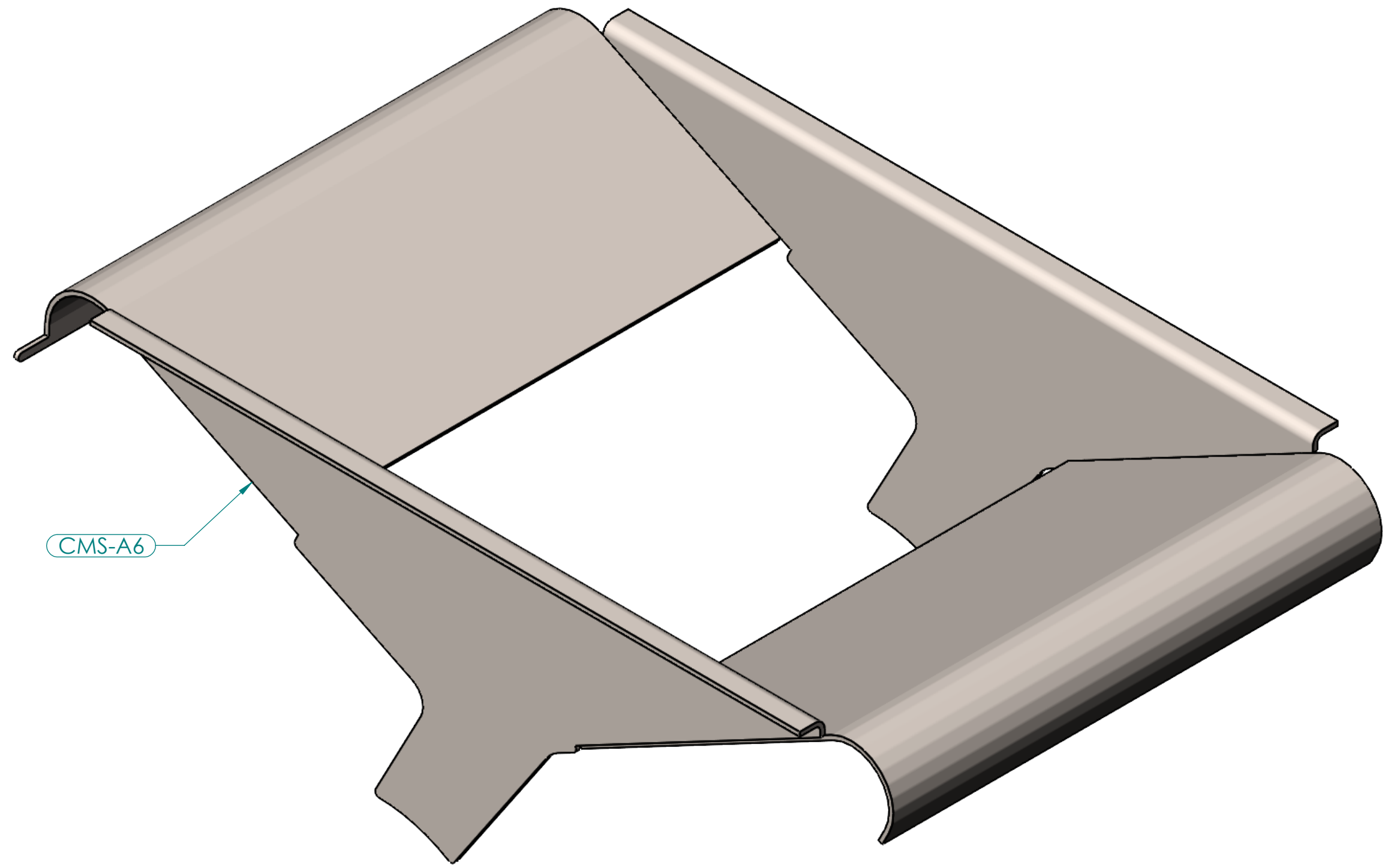
3

2

1

B

B



CMS-A6

A

A

ALL PARTS IN THIS ASSEMBLY ARE FULLY FABRICATED AND THEREFORE CANNOT BE SOLD SEPERATELY

Ullmer's Dairy Equipment

QUANTITY:	PUNCH:	DIE:	MATERIAL:		NAME	DATE	TITLE: CURD MILL- HOPPER				
PROPRIETARY AND CONFIDENTIAL THE INFORMATION CONTAINED IN THIS DRAWING IS THE SOLE PROPERTY OF ULLMERS DAIRY EQUIPMENT. ANY REPRODUCTION IN PART OR AS A WHOLE WITHOUT THE WRITTEN PERMISSION OF ULLMERS DAIRY EQUIPMENT IS PROHIBITED.	UNLESS OTHERWISE SPECIFIED: DIMENSIONS ARE IN INCHES TOLERANCES: FRACTIONAL ± 1/16 ANGULAR: BEND ± 0.50 TWO PLACE DECIMAL ± .030 THREE PLACE DECIMAL ± .010		304 SS		DRAWN	JTK	2/20/2023	SIZE B		DWG. NO. CURD MILL PART LIST	REV
					REVISED	JTK	2/24/2023				
					ENG APPR.				MFG APPR.		
	LAST SAVED	2/24/2023	DO NOT SCALE DRAWING	Q.A.							

4

3

2

1

4

3

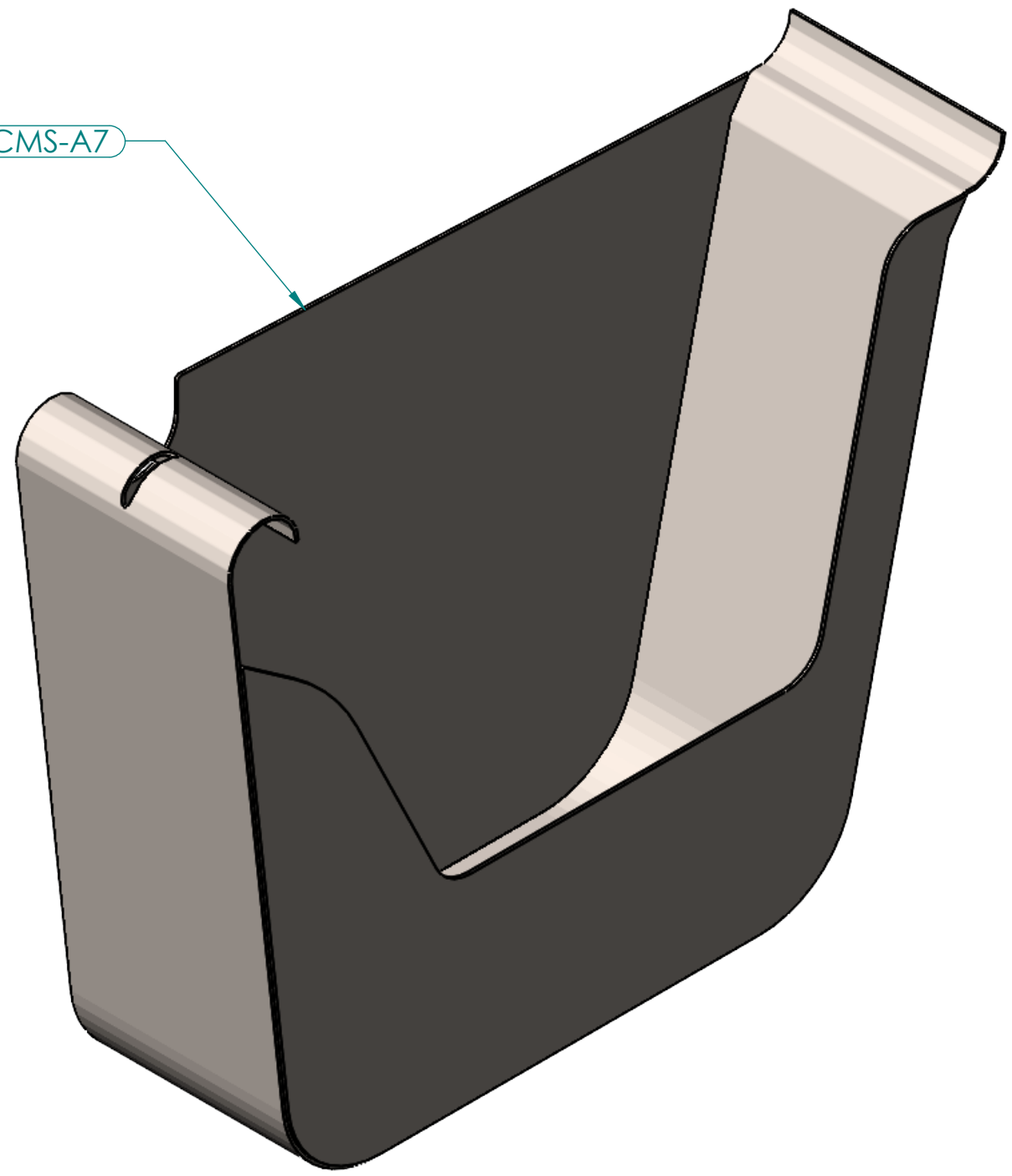
2

1

B

B

CMS-A7



A

A

ALL PARTS IN THIS ASSEMBLY ARE FULLY FABRICATED AND THEREFORE CANNOT BE SOLD SEPERATELY

Ullmer's Dairy Equipment							TITLE: CURD MILL- BOTTOM DRIVE GUARD		
QUANTITY:	PUNCH:	DIE:	MATERIAL:		NAME	DATE	SIZE B	DWG. NO. CURD MILL PART LIST	REV
PROPRIETARY AND CONFIDENTIAL THE INFORMATION CONTAINED IN THIS DRAWING IS THE SOLE PROPERTY OF ULLMERS DAIRY EQUIPMENT. ANY REPRODUCTION IN PART OR AS A WHOLE WITHOUT THE WRITTEN PERMISSION OF ULLMERS DAIRY EQUIPMENT IS PROHIBITED.	UNLESS OTHERWISE SPECIFIED: DIMENSIONS ARE IN INCHES TOLERANCES: FRACTIONAL: ± 1/16 ANGULAR: BEND ± 0.50 TWO PLACE DECIMAL ± .030 THREE PLACE DECIMAL ± .010		304 SS		DRAWN JTK	2/20/2023			
	LAST SAVED	2/24/2023	DO NOT SCALE DRAWING	Q.A.	ENG APPR.		SCALE: 1:3	WEIGHT:	SHEET 5 OF 11

4

3

2

1

4

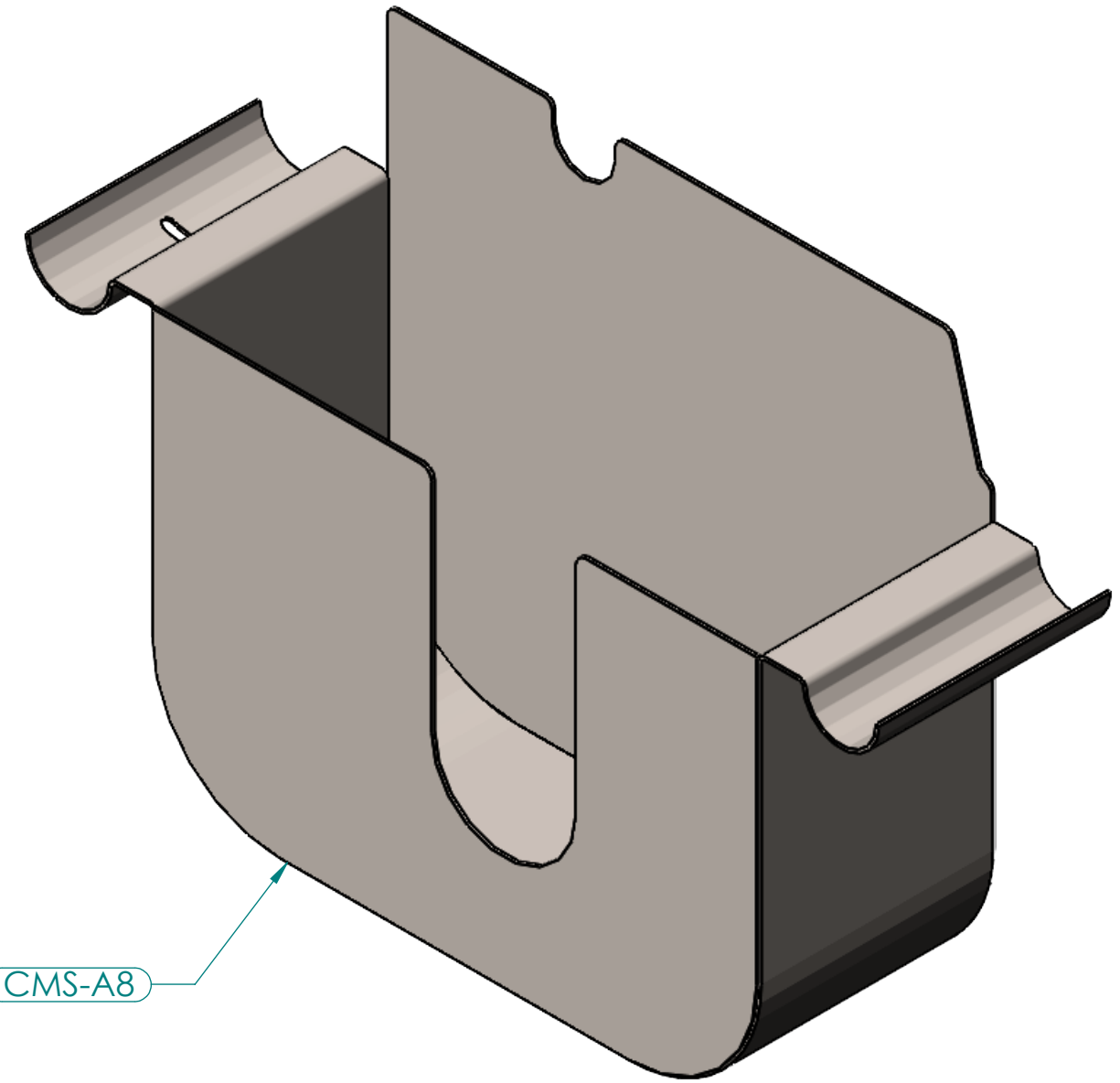
3

2

1

B

B



CMS-A8

A

A

ALL PARTS IN THIS ASSEMBLY ARE FULLY FABRICATED AND THEREFORE CANNOT BE SOLD SEPERATELY

QUANTITY:							PUNCH:		DIE:		MATERIAL:		NAME		DATE		Ullmer's Dairy Equipment			
PROPRIETARY AND CONFIDENTIAL THE INFORMATION CONTAINED IN THIS DRAWING IS THE SOLE PROPERTY OF ULLMERS DAIRY EQUIPMENT. ANY REPRODUCTION IN PART OR AS A WHOLE WITHOUT THE WRITTEN PERMISSION OF ULLMERS DAIRY EQUIPMENT IS PROHIBITED.							UNLESS OTHERWISE SPECIFIED: DIMENSIONS ARE IN INCHES TOLERANCES: FRACTIONAL: ± 1/16 ANGULAR: BEND ± 0.50 TWO PLACE DECIMAL ± .030 THREE PLACE DECIMAL ± .010		304 SS		DRAWN		JTK		2/20/2023		TITLE: CURD MILL- TOP DRIVE GUARD			
											REVISED		JTK		2/24/2023		SIZE	DWG. NO.		REV
											ENG APPR.						B	CURD MILL PART LIST		
							LAST SAVED		2/24/2023		DO NOT SCALE DRAWING		Q.A.				SCALE: 1:3		WEIGHT:	SHEET 6 OF 11

4

3

2

1

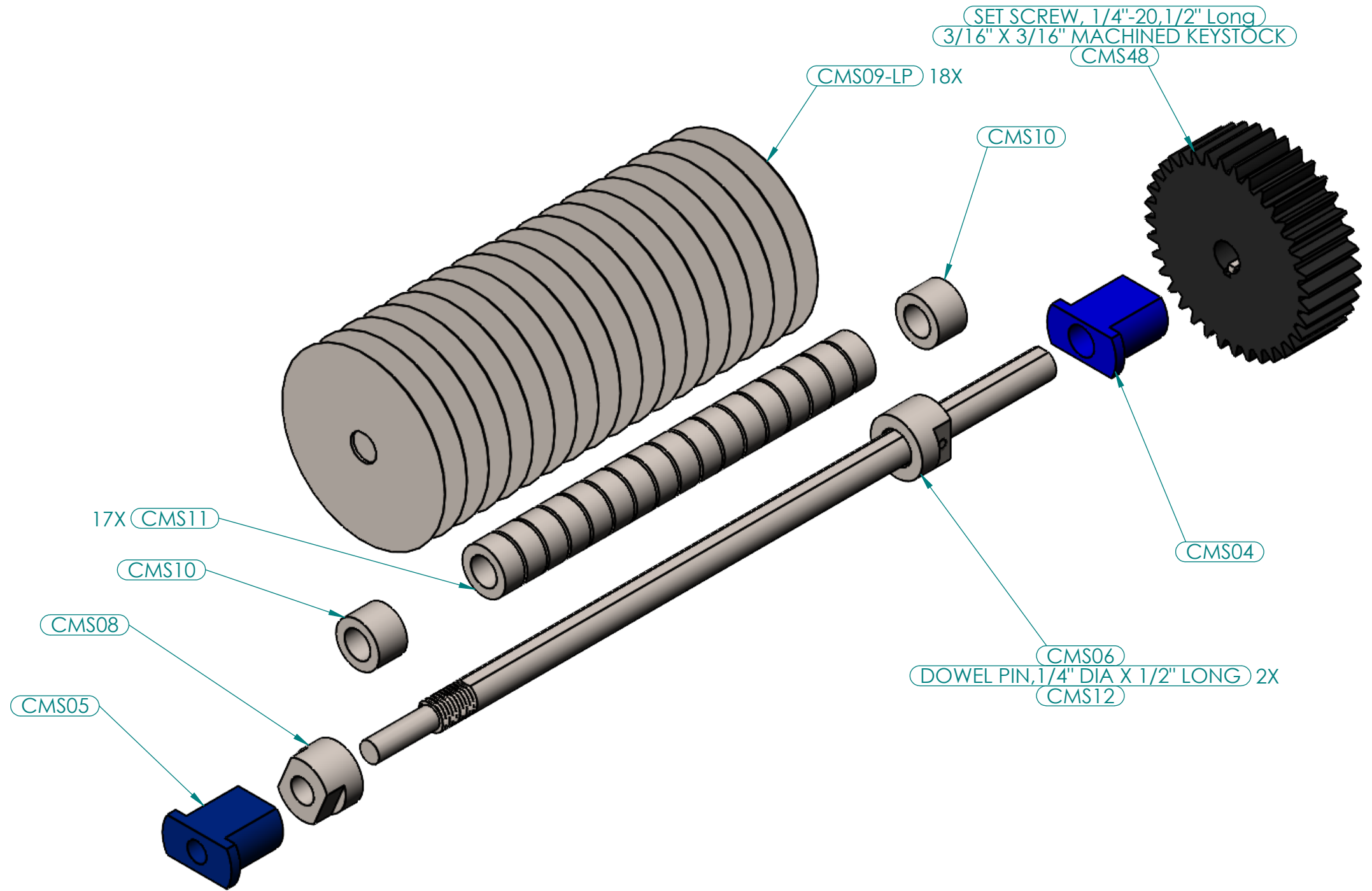
4

3

2

1

PART NO	DESCRIPTION	QTY
90145A537	DOWEL PIN, 1/4" DIA X 1/2" LONG	2
92311A537	SET SCREW, 1/4"-20, 1/2" Long	2
92530A117	KEYSTOCK 1 (1.375)	1
CMS04	BUSHING BACK	1
CMS05	BUSHING FRONT	1
CMS06	END BUSHING	1
CMS08	END NUT LH	1
CMS09-LP	CUTTING DISC-LP	18
CMS10	SPACER BUSHING END, 0.625" SPACING	2
CMS11	SPACER BUSHING MID, 0.625" SPACING	17
CMS12	DISC SHAFT LH	1
CMS48	MID GEAR	1



B

B

A

A

ALL PARTS SHOWN IN PARTS LIST ARE PREFERRED TO BE SOLD TOGETHER AS A SET

Ullmer's Dairy Equipment						
QUANTITY:	PUNCH:	DIE:	MATERIAL:	NAME	DATE	TITLE:
PROPRIETARY AND CONFIDENTIAL THE INFORMATION CONTAINED IN THIS DRAWING IS THE SOLE PROPERTY OF ULLMERS DAIRY EQUIPMENT. ANY REPRODUCTION IN PART OR AS A WHOLE WITHOUT THE WRITTEN PERMISSION OF ULLMERS DAIRY EQUIPMENT IS PROHIBITED.	UNLESS OTHERWISE SPECIFIED: DIMENSIONS ARE IN INCHES TOLERANCES: FRACTIONAL: ± 1/16 ANGULAR: BEND ± 0.50 TWO PLACE DECIMAL ± .030 THREE PLACE DECIMAL ± .010		304 SS	DRAWN REVISED ENG APPR. MFG APPR. Q.A.	JTK JTK	2/20/2023 2/24/2023
			INTERPRET GEOMETRIC TOLERANCING PER: DO NOT SCALE DRAWING			CURD MILL- UPPER BLADE SET
		LAST SAVED	2/24/2023			SIZE: B
						DWG. NO.: CURD MILL PART LIST
						REV
						SCALE: 1:2.5
						WEIGHT:
						SHEET 7 OF 11

4

3

2

1

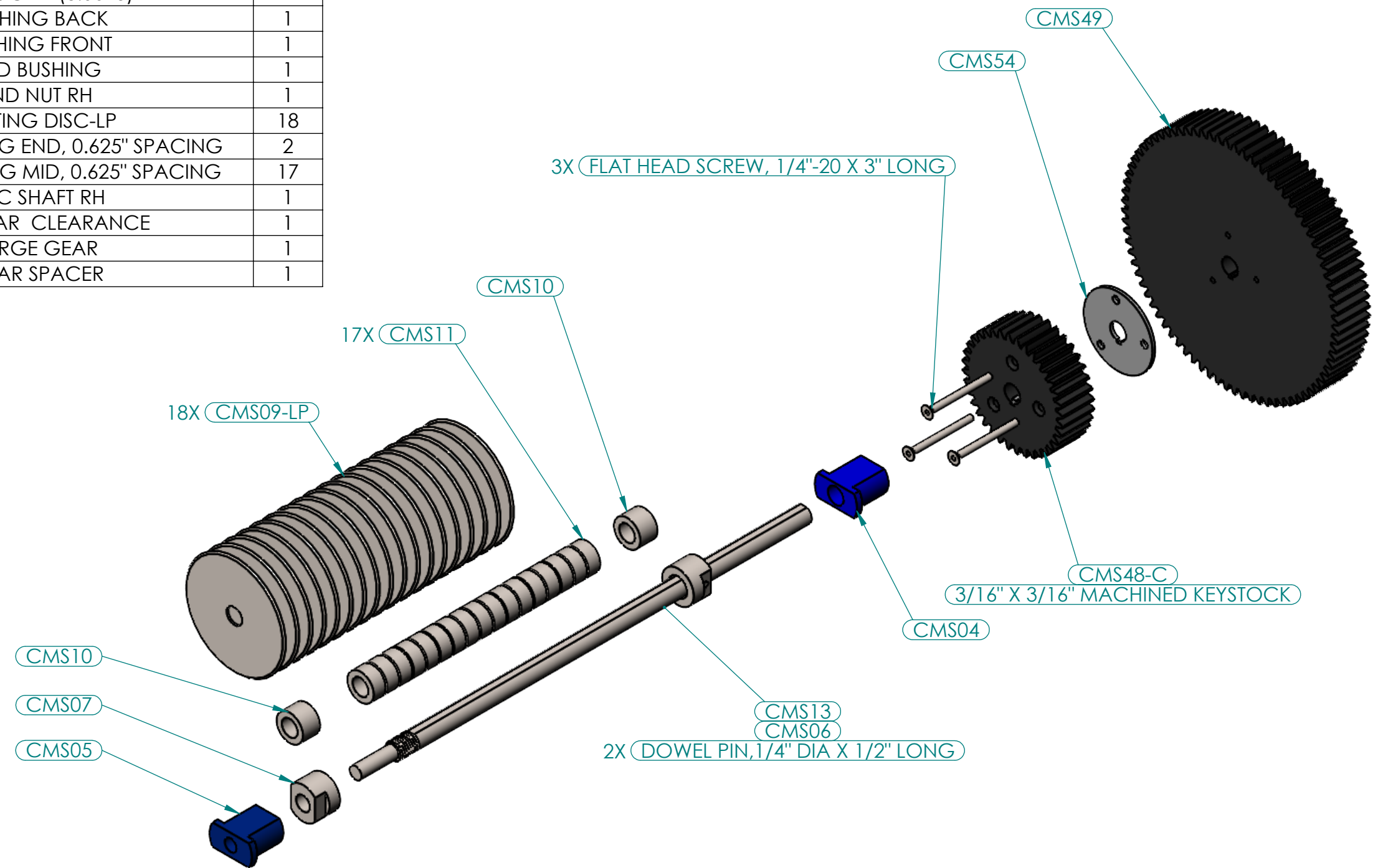
4

3

2

1

PART NO	DESCRIPTION	QTY
90145A537	DOWEL PIN, 1/4" DIA X 1/2" LONG	2
92210A555	FLAT HEAD SCREW, 1/4"-20 X 3" LONG	3
92311A537	SET SCREW, 1/4"-20, 1/2" Long	4
92530A117	KEYSTOCK 2 (3.0625)	1
CMS04	BUSHING BACK	1
CMS05	BUSHING FRONT	1
CMS06	END BUSHING	1
CMS07	END NUT RH	1
CMS09-LP	CUTTING DISC-LP	18
CMS10	SPACER BUSHING END, 0.625" SPACING	2
CMS11	SPACER BUSHING MID, 0.625" SPACING	17
CMS13	DISC SHAFT RH	1
CMS48-C	MID GEAR CLEARANCE	1
CMS49	LARGE GEAR	1
CMS54	GEAR SPACER	1



B

B

A

A

ALL PARTS SHOWN IN PARTS LIST ARE PREFERRED TO BE SOLD TOGETHER AS A SET

Ullmer's Dairy Equipment						
QUANTITY:	PUNCH:	DIE:	MATERIAL:	NAME	DATE	TITLE:
PROPRIETARY AND CONFIDENTIAL THE INFORMATION CONTAINED IN THIS DRAWING IS THE SOLE PROPERTY OF ULLMERS DAIRY EQUIPMENT. ANY REPRODUCTION IN PART OR AS A WHOLE WITHOUT THE WRITTEN PERMISSION OF ULLMERS DAIRY EQUIPMENT IS PROHIBITED.	UNLESS OTHERWISE SPECIFIED: DIMENSIONS ARE IN INCHES TOLERANCES: FRACTIONAL: ± 1/16 ANGULAR: BEND ± 0.50 TWO PLACE DECIMAL ± .030 THREE PLACE DECIMAL ± .010		304 SS	DRAWN REVISED ENG APPR. MFG APPR. Q.A.	JTK JTK	2/20/2023 2/24/2023
			INTERPRET GEOMETRIC TOLERANCING PER: DO NOT SCALE DRAWING			CURD MILL- LOWER BLADE SET
		LAST SAVED	2/24/2023			SIZE B
						DWG. NO. CURD MILL PART LIST
						REV
						SCALE: 1:4
						WEIGHT:
						SHEET 8 OF 11

4

3

2

1

4

3

2

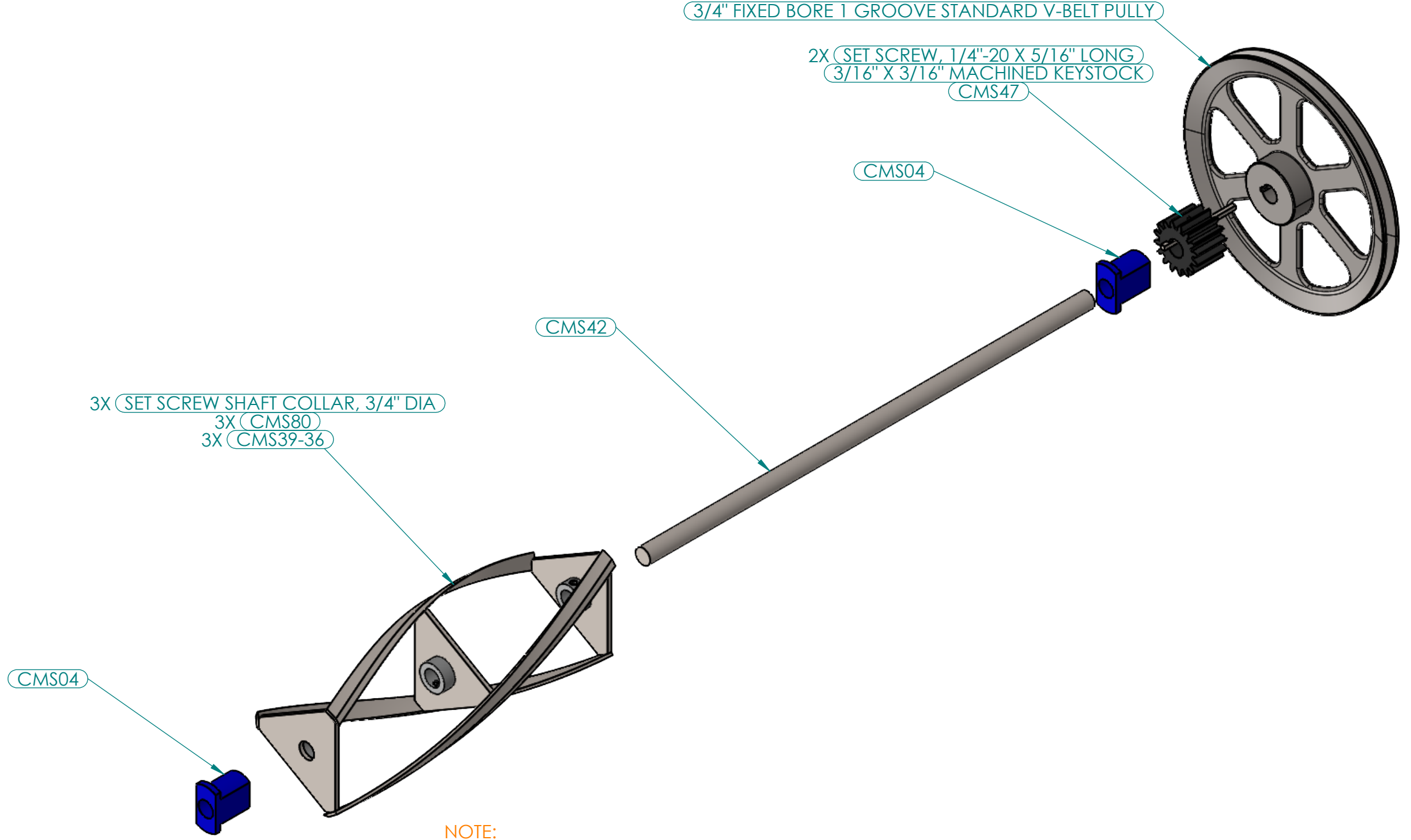
1

B

B

A

A



3/4" FIXED BORE 1 GROOVE STANDARD V-BELT PULLY

2X SET SCREW, 1/4"-20 X 5/16" LONG
3/16" X 3/16" MACHINED KEYSTOCK
CMS47

CMS04

CMS42

3X SET SCREW SHAFT COLLAR, 3/4" DIA
3X (CMS80)
3X (CMS39-36)

CMS04

NOTE:
 THE ASSEMBLY SHOWN IS OF A STANDARD 3-BLADE SETUP CONSISTING OF A CURD LENGTH OF 3/4"-1" LONG
 ADDITIONAL OPTIONS ARE AVAILABLE:

- DUAL BLADE = 2-BLADE SETUP CONSISTING OF A CURD LENGTH OF 1"-1.5" LONG
- QUAD BLADE- 4-BLADE SETUP CONSISTING OF A CURD LENGTH OF 1/2"-3/4" LONG

ALL PARTS SHOWN IN PARTS LIST ARE PREFERRED TO BE SOLD TOGETHER AS A SET

QUANTITY:		PUNCH:	DIE:	MATERIAL:	NAME	DATE	Ullmer's Dairy Equipment		
PROPRIETARY AND CONFIDENTIAL THE INFORMATION CONTAINED IN THIS DRAWING IS THE SOLE PROPERTY OF ULLMERS DAIRY EQUIPMENT. ANY REPRODUCTION IN PART OR AS A WHOLE WITHOUT THE WRITTEN PERMISSION OF ULLMERS DAIRY EQUIPMENT IS PROHIBITED.		UNLESS OTHERWISE SPECIFIED: DIMENSIONS ARE IN INCHES TOLERANCES: FRACTIONAL: ± 1/16 ANGULAR: BEND ± 0.50 TWO PLACE DECIMAL ± .030 THREE PLACE DECIMAL ± .010		304 SS	DRAWN	JTK	2/20/2023	TITLE: CURD MILL- TRIBLADE ASSEMBLY	
		LAST SAVED		2/24/2023	REVISED	JTK	2/24/2023	SIZE	DWG. NO.
					ENG APPR.			B	CURD MILL PART LIST
					MFG APPR.			SCALE: 1:4	WEIGHT:
					Q.A.				SHEET 9 OF 11

4

3

2

1

4

3

2

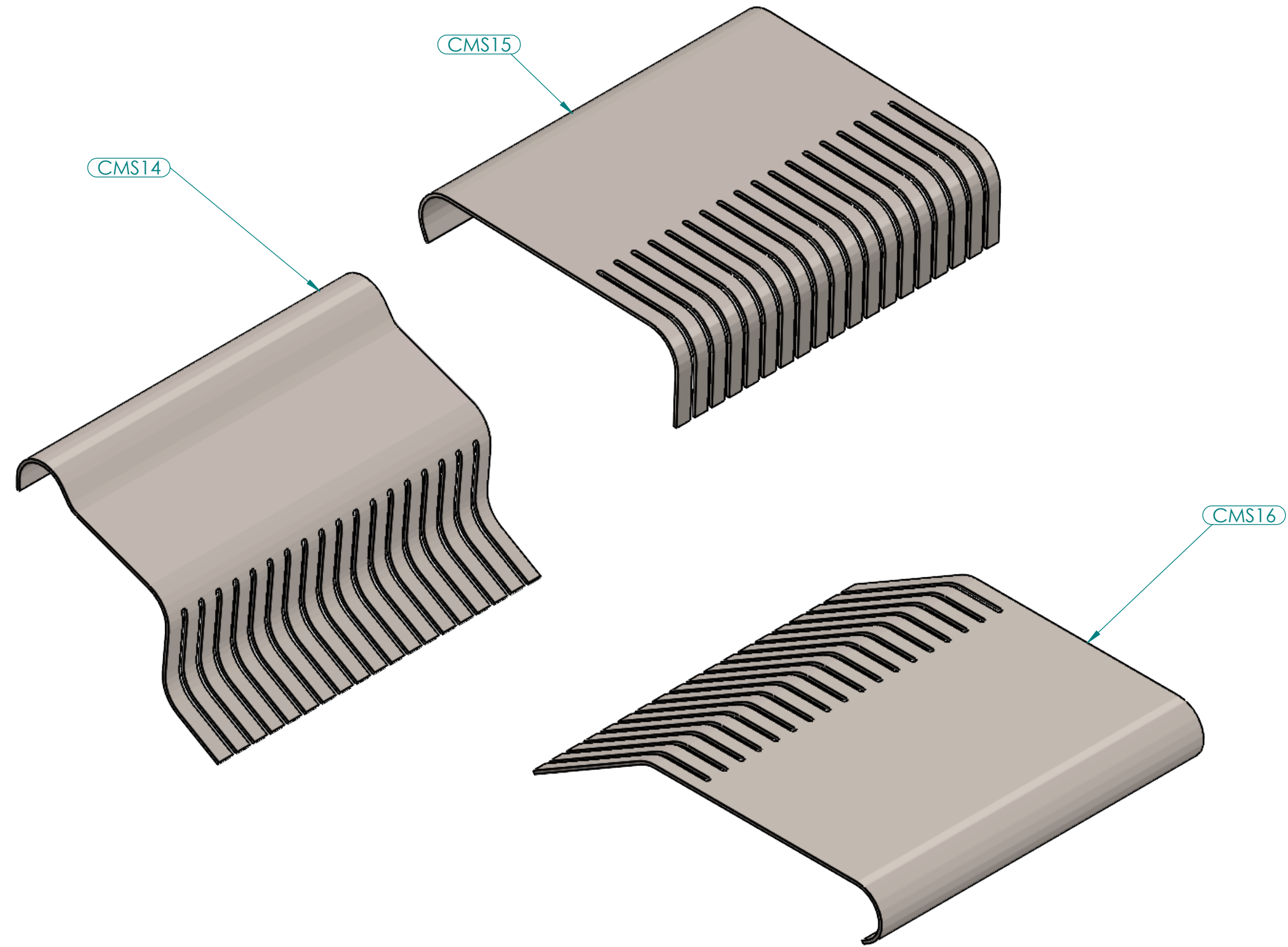
1

B

B

A

A



Ullmer's Dairy Equipment						
TITLE: CURD MILL- BLADE FINGER GUARDS						
SIZE	DWG. NO.		REV			
B	CURD MILL PART LIST					
SCALE: 1:3	WEIGHT:	SHEET 10 OF 11				

QUANTITY:	PUNCH:	DIE:	MATERIAL:	NAME	DATE
PROPRIETARY AND CONFIDENTIAL THE INFORMATION CONTAINED IN THIS DRAWING IS THE SOLE PROPERTY OF ULLMERS DAIRY EQUIPMENT. ANY REPRODUCTION IN PART OR AS A WHOLE WITHOUT THE WRITTEN PERMISSION OF ULLMERS DAIRY EQUIPMENT IS PROHIBITED.	UNLESS OTHERWISE SPECIFIED: DIMENSIONS ARE IN INCHES TOLERANCES: FRACTIONAL: ± 1/16 ANGULAR: BEND ± 0.50 TWO PLACE DECIMAL ± .030 THREE PLACE DECIMAL ± .010		304 SS	DRAWN JTK	2/20/2023
	LAST SAVED	2/24/2023	DO NOT SCALE DRAWING	ENG APPR.	
				MFG APPR.	
				Q.A.	

4

3

2

1

4

3

2

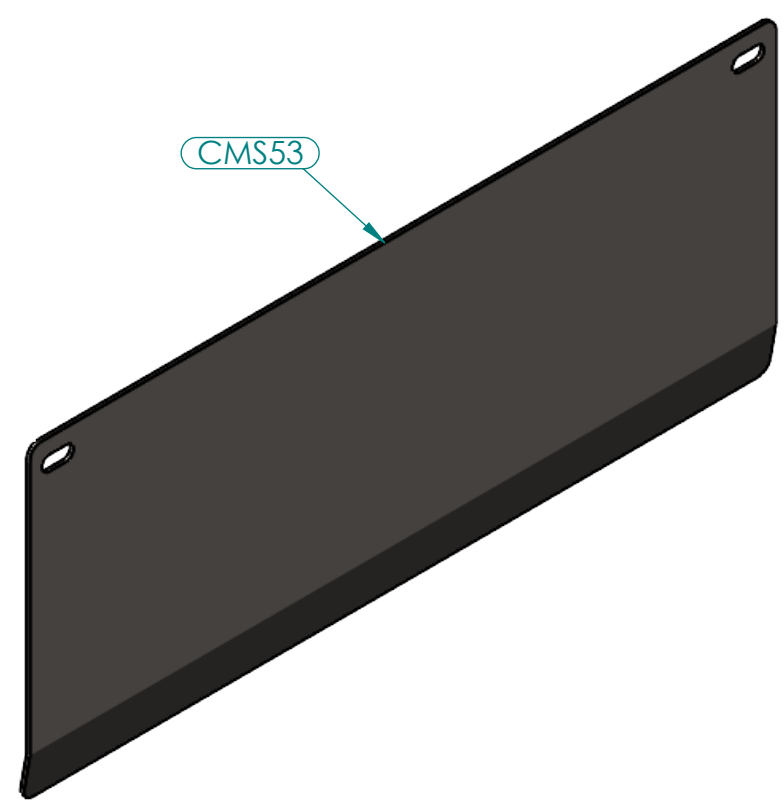
1

B

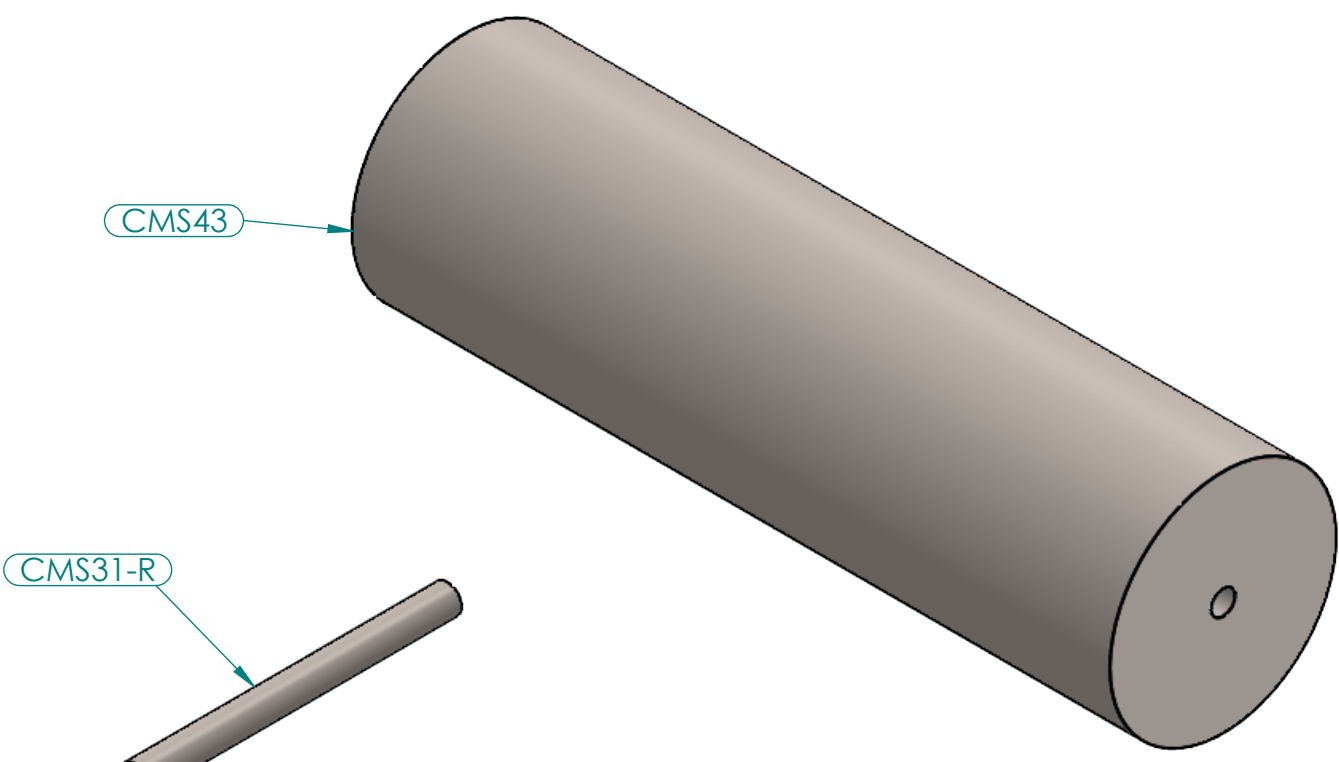
B

A

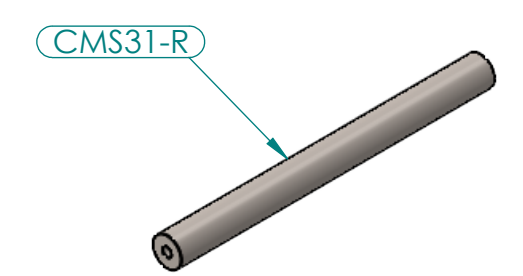
A



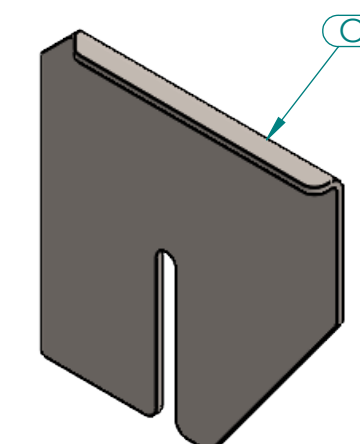
CMS53



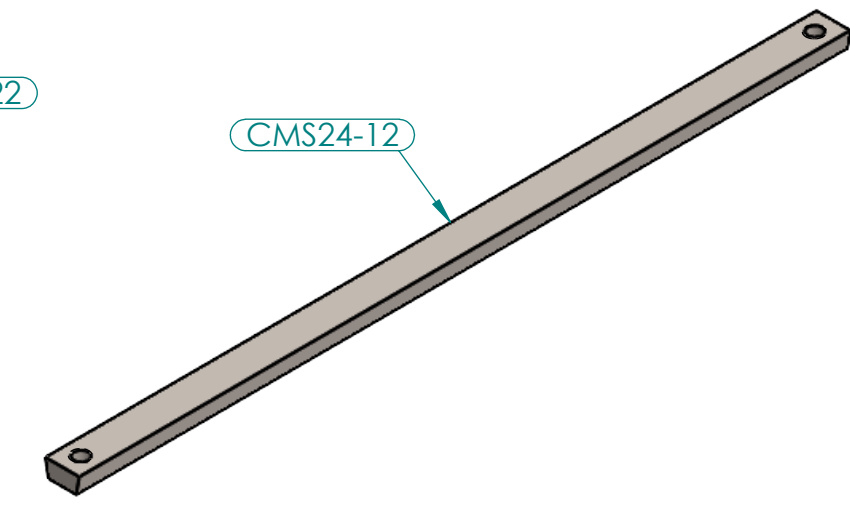
CMS43



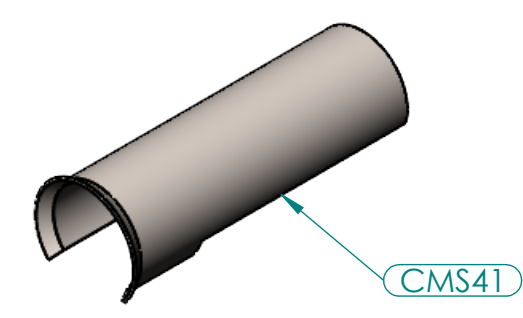
CMS31-R



CMS22



CMS24-12



CMS41

Ullmer's Dairy Equipment

QUANTITY:		PUNCH:	DIE:	MATERIAL:	NAME	DATE	TITLE: CURD MILL- ADDITIONAL REPLACEMENT PARTS			
PROPRIETARY AND CONFIDENTIAL THE INFORMATION CONTAINED IN THIS DRAWING IS THE SOLE PROPERTY OF ULLMERS DAIRY EQUIPMENT. ANY REPRODUCTION IN PART OR AS A WHOLE WITHOUT THE WRITTEN PERMISSION OF ULLMERS DAIRY EQUIPMENT IS PROHIBITED.		UNLESS OTHERWISE SPECIFIED: DIMENSIONS ARE IN INCHES TOLERANCES: FRACTIONAL: ± 1/16 ANGULAR: BEND ± 0.50 TWO PLACE DECIMAL ± .030 THREE PLACE DECIMAL ± .010		304 SS	DRAWN	JTK	2/20/2023	SIZE	DWG. NO.	REV
		LAST SAVED	2/24/2023	DO NOT SCALE DRAWING	ENG APPR.	JTK	2/24/2023	B	CURD MILL PART LIST	
				Q.A.	MFG APPR.			SCALE: 1:3	WEIGHT:	SHEET 11 OF 11

4

3

2

1